

Biotin Anti-Mouse Ly-6G Monoclonal Antibody



天津三箭生物技术股份有限公司
Tianjin Sungene Biotech Co., Ltd.
精准 高效 稳定 Precision Efficient Stable

| Catalog Number | Vial Size |
|----------------|-----------|
| M100L8-08B | 50 µg |
| M100L8-08E | 500 µg |

Market | 400-621-0003
marketing@sungenebiotech.com

Support | 022-66211636-8024
techsupport@sungenebiotech.com

Web | www.sungenebiotech.com

Important Note: Centrifuge before opening to ensure complete recovery of vial contents.
This product is guaranteed up to one year from purchase.

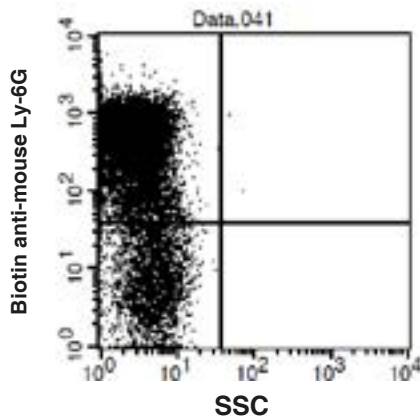
Purified Antibody Characterization

| Clone | Isotype | Reactivity |
|-------|-----------|------------|
| 1A8 | Rat IgG2a | Mouse |

Description

The 1A8 antibody reacts with Ly-6G, a 21-25-kDa GPI-anchored protein. In the bone marrow, Ly-6G is expressed on the majority of the largest cells, which are predominantly granulocytes, and not on lymphoid or erythroid cells. In the periphery, it is expressed on granulocytes.

Illustration of Immunofluorescent Staining



C57BL/6 mouse granulocyte of bone marrow
stained with Biotin anti-mouse Ly-6G,
followed by PE-SA

Product Information

Conjugation: Biotin

Formulation: PBS pH 7.2, 0.09% NaN₃,
0.2% BSA

Concentration: 0.5 mg/ml

Storage: Keep as concentrated solution.
Store at 4°C and protected from prolonged
exposure to light. **Do not freeze.**

Application: Recommended Application: FC

Usage: Each lot of this antibody is quality
control tested by immunofluorescent staining
with flow cytometric analysis (The amount of
the reagent is suggested to be used ≤0.25
µg /10⁶ cells in 100 µl). Since applications
vary, the appropriate dilutions must be
determined for individual use.

For Research Use Only.